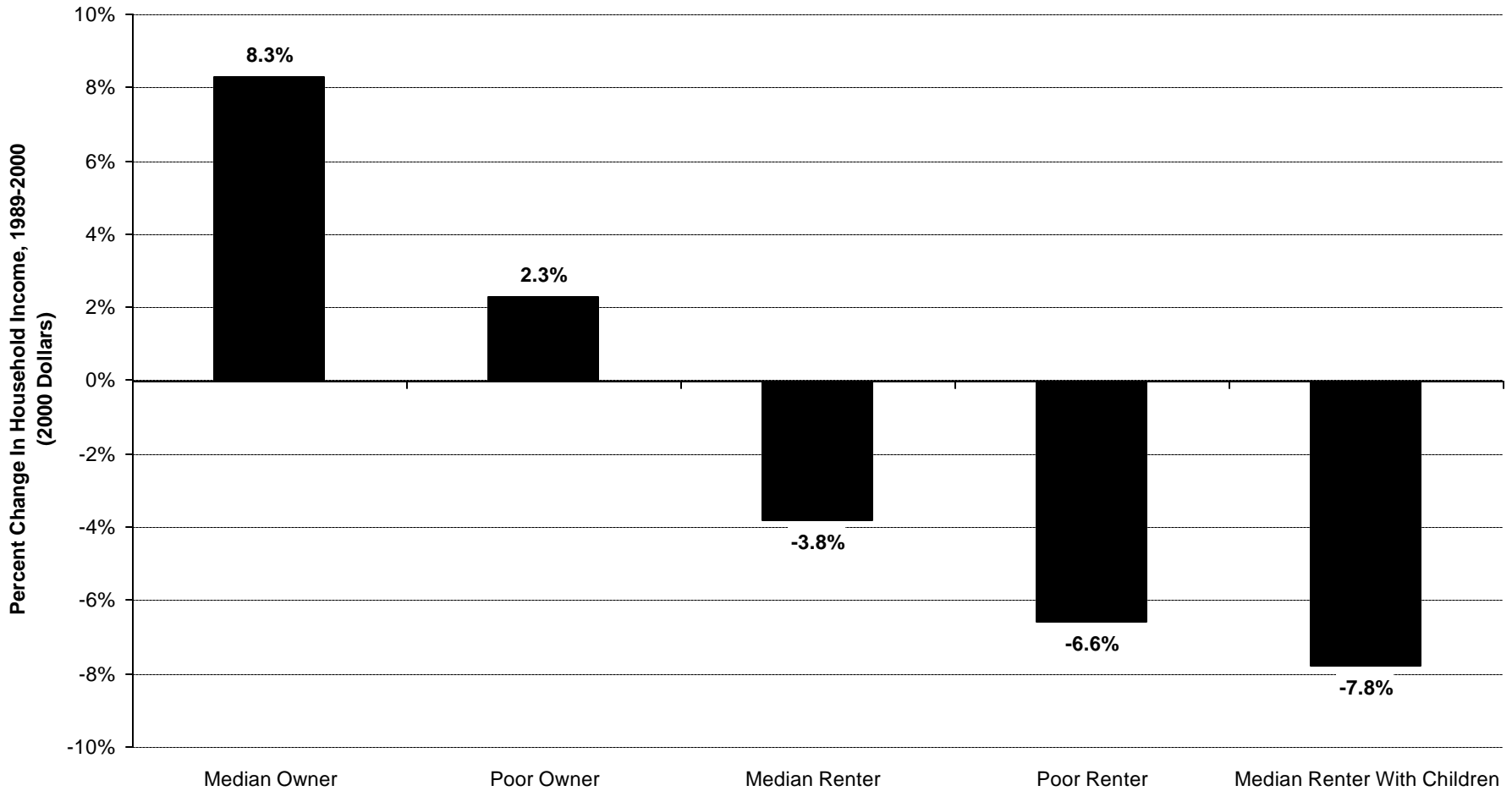


## **Locked Out 2002: California's Affordable Housing Crisis Continues**

California Budget Project  
921 11th Street, Suite 502  
Sacramento, CA 95814  
(916) 444-0500  
[cbp@cbp.org](mailto:cbp@cbp.org)  
[www.cbp.org](http://www.cbp.org)

October 2002

## Renters' Incomes Fail To Keep Pace With Inflation

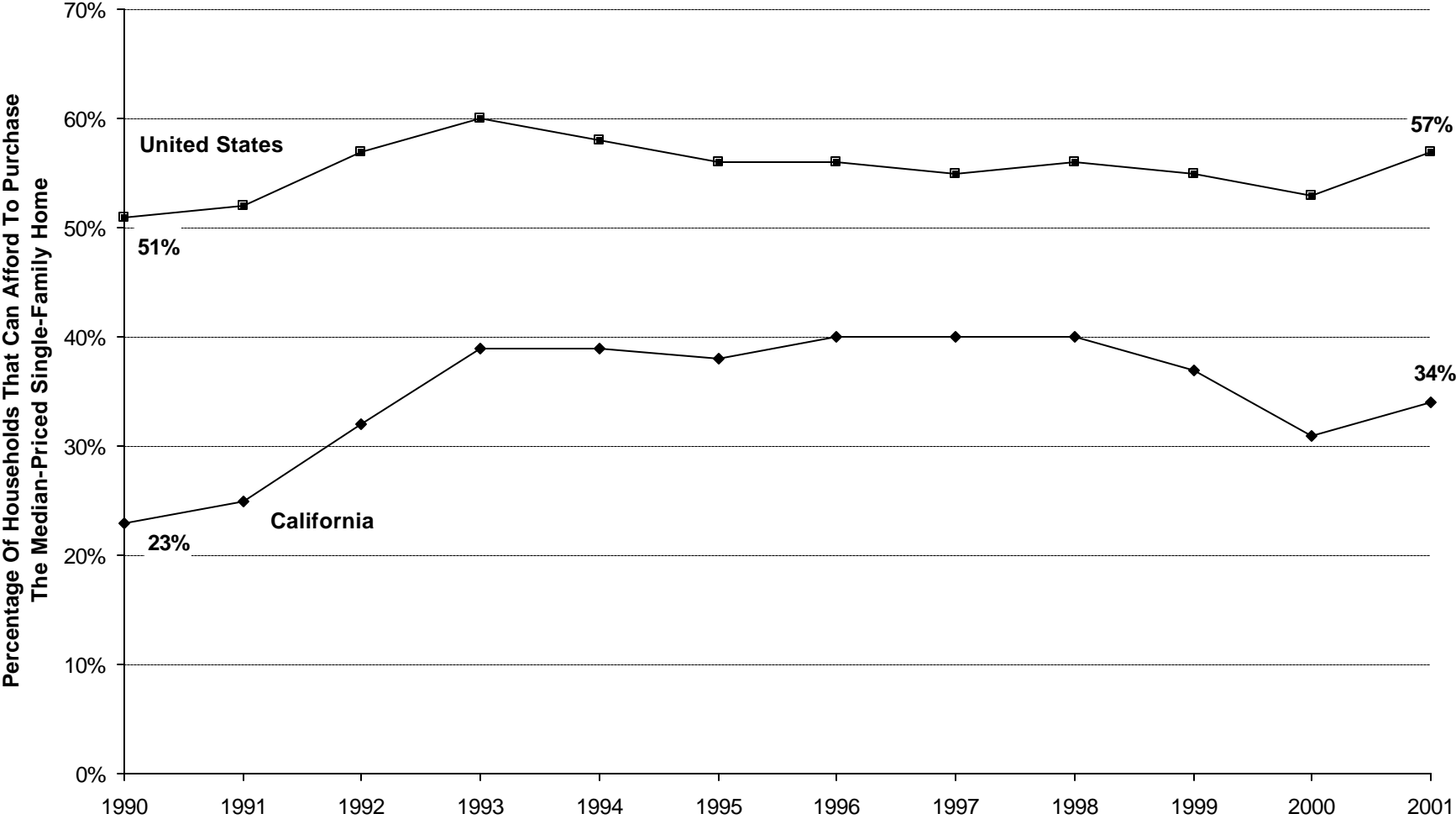


Note: "Poor" is 20th percentile.

Source: CBP analysis of Current Population Survey data

California Budget Project  
October 2002

# Housing Affordability In California Is Well Below That Of The Nation



Source: California Association of Realtors

## Housing Affordability, Metropolitan California (2001)

	<u>Renters</u>		<u>Homeowners</u>	
	Percentage Of Households	Number Of Households	Percentage Of Households	Number Of Households
Total Households Paying More Than 30% Of Their Income For Housing	51%	2,048,000	34%	1,657,000
Total Households Paying More Than 50% Of Their Income For Housing	25%	1,003,000	15%	733,000
Low-Income Households Paying More Than 30% Of Their Income For Housing	88%	1,010,000	80%	444,000
Low-Income Households Paying More Than 50% Of Their Income For Housing	66%	763,000	61%	341,000

Source: CBP analysis of American Housing Survey data. Low-income households are defined as those with annual incomes under \$18,000.

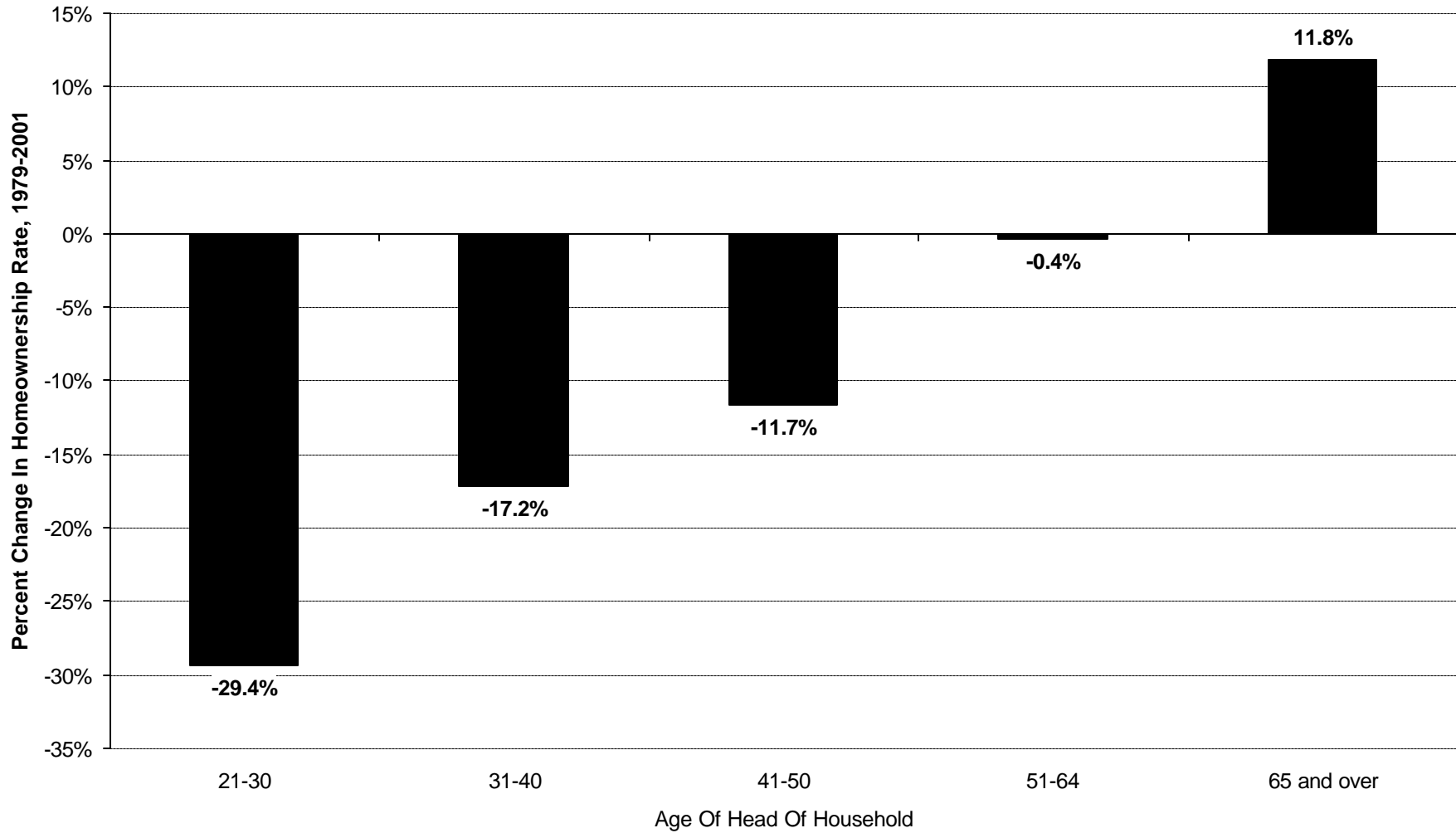
## Housing Affordability, Los Angeles County (2001)

	<u>Renters</u>		<u>Homeowners</u>	
	Percentage Of Households	Number Of Households	Percentage Of Households	Number Of Households
Total Households Paying More Than 30% Of Their Income For Housing	50%	803,000	40%	569,000
Total Households Paying More Than 50% Of Their Income For Housing	25%	409,000	16%	234,000
Low-Income Households Paying More Than 30% Of Their Income For Housing	88%	444,000	*	*
Low-Income Households Paying More Than 50% Of Their Income For Housing	68%	341,000	*	*

\*Sample too small to produce a reliable estimate.

Source: CBP analysis of American Housing Survey data. Low-income households are defined as those with annual incomes under \$18,000.

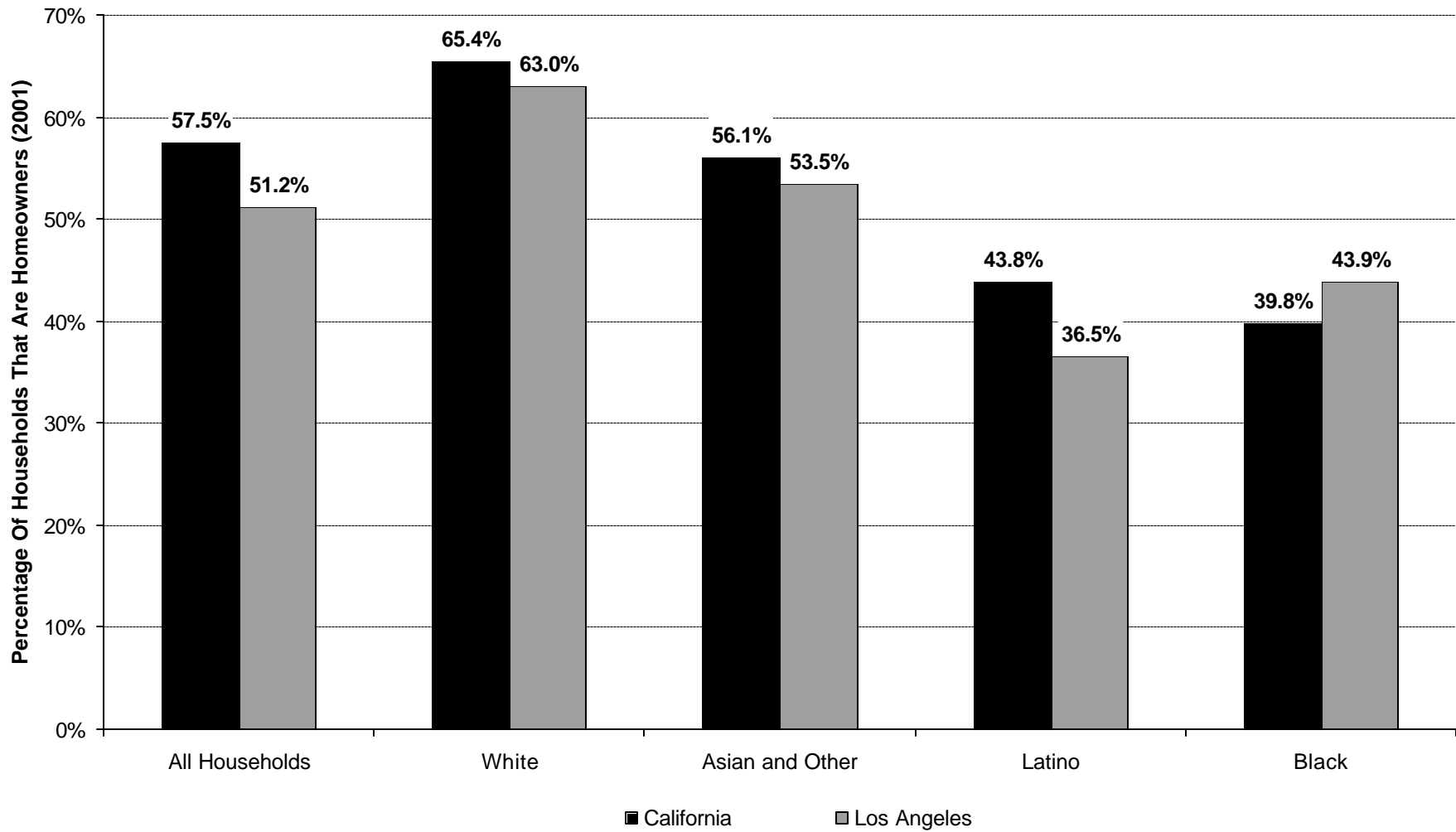
## Homeownership Rates Down Among All But Seniors



Source: CBP analysis of Current Population Survey data

California Budget Project  
October 2002

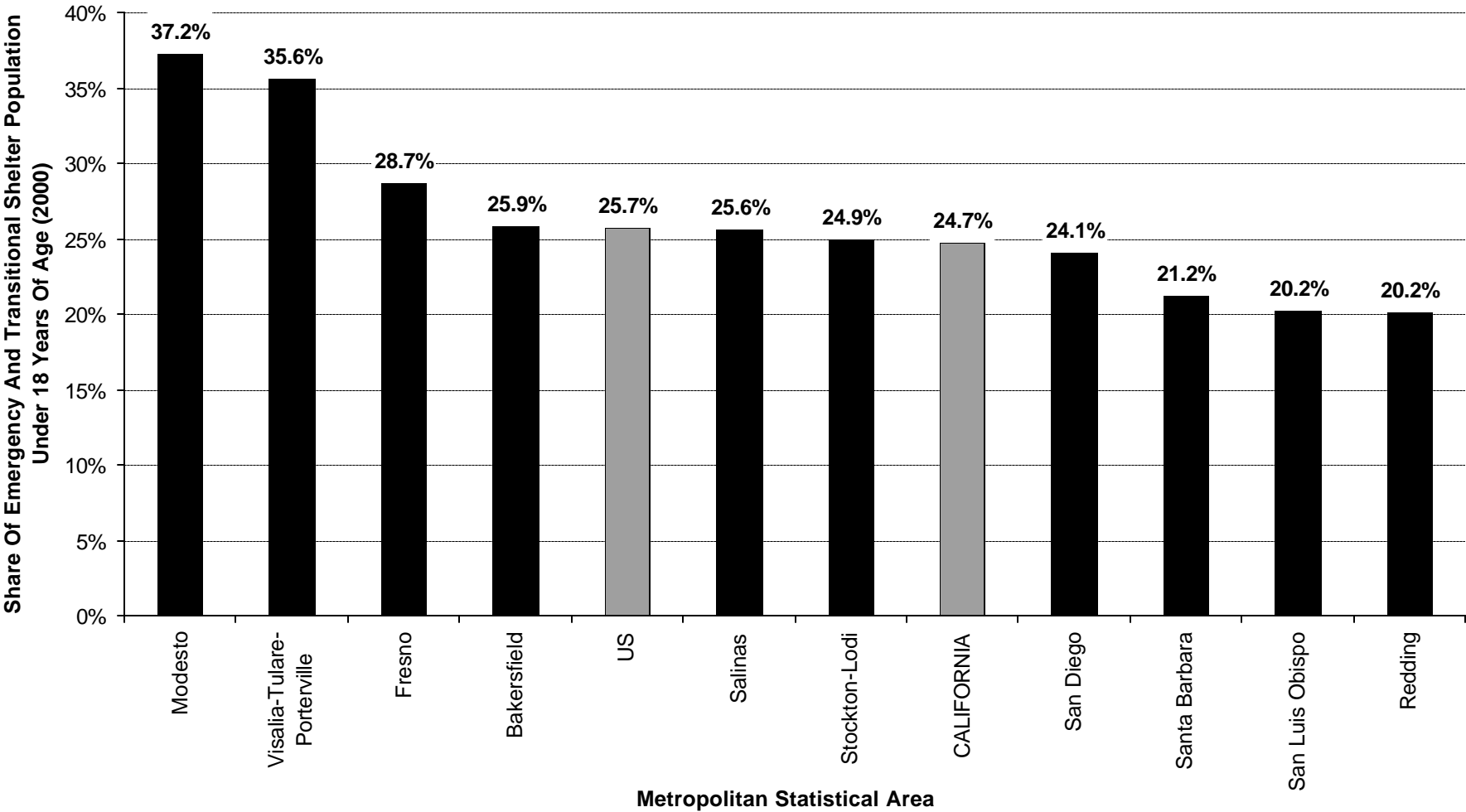
## Homeownership Rates Differ By Race, Ethnicity



Source: CBP analysis of Current Population Survey data

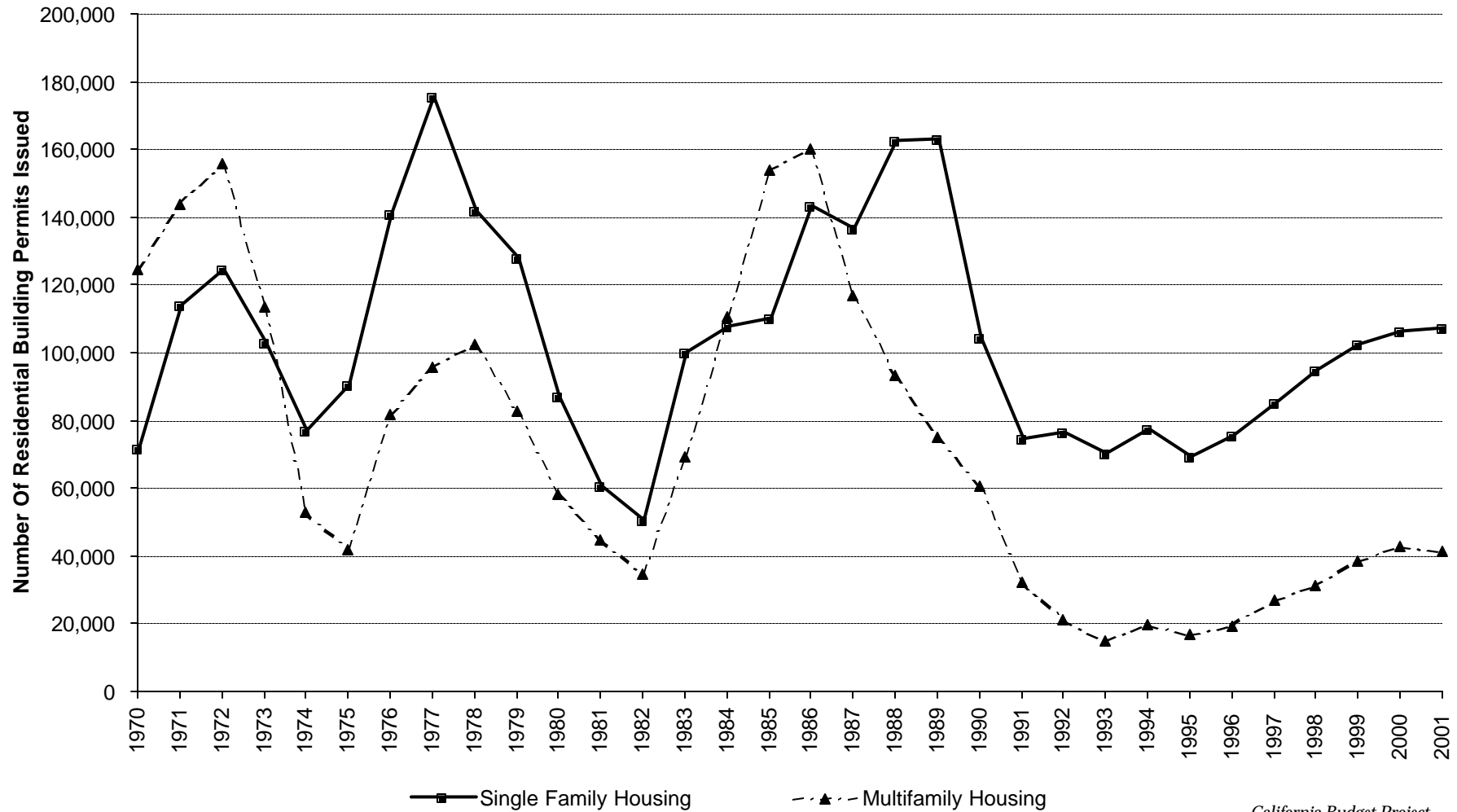
California Budget Project  
October 2002

# Children Make Up A Significant Share Of California's Homeless Population



Source: US Census Bureau

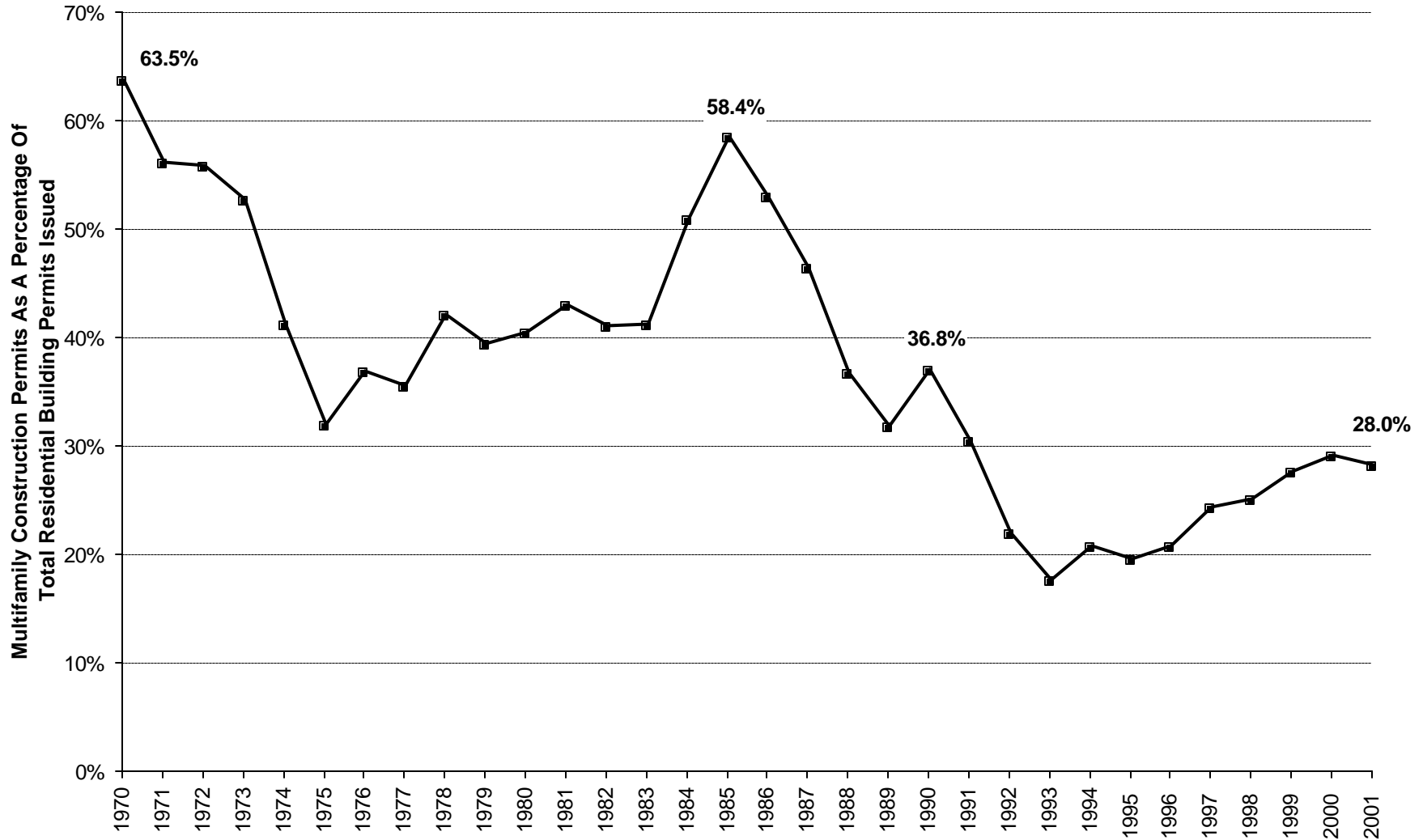
## Housing Production Is Increasing Too Slowly To Meet Statewide Needs



Source: Construction Industry Research Board

California Budget Project  
October 2002

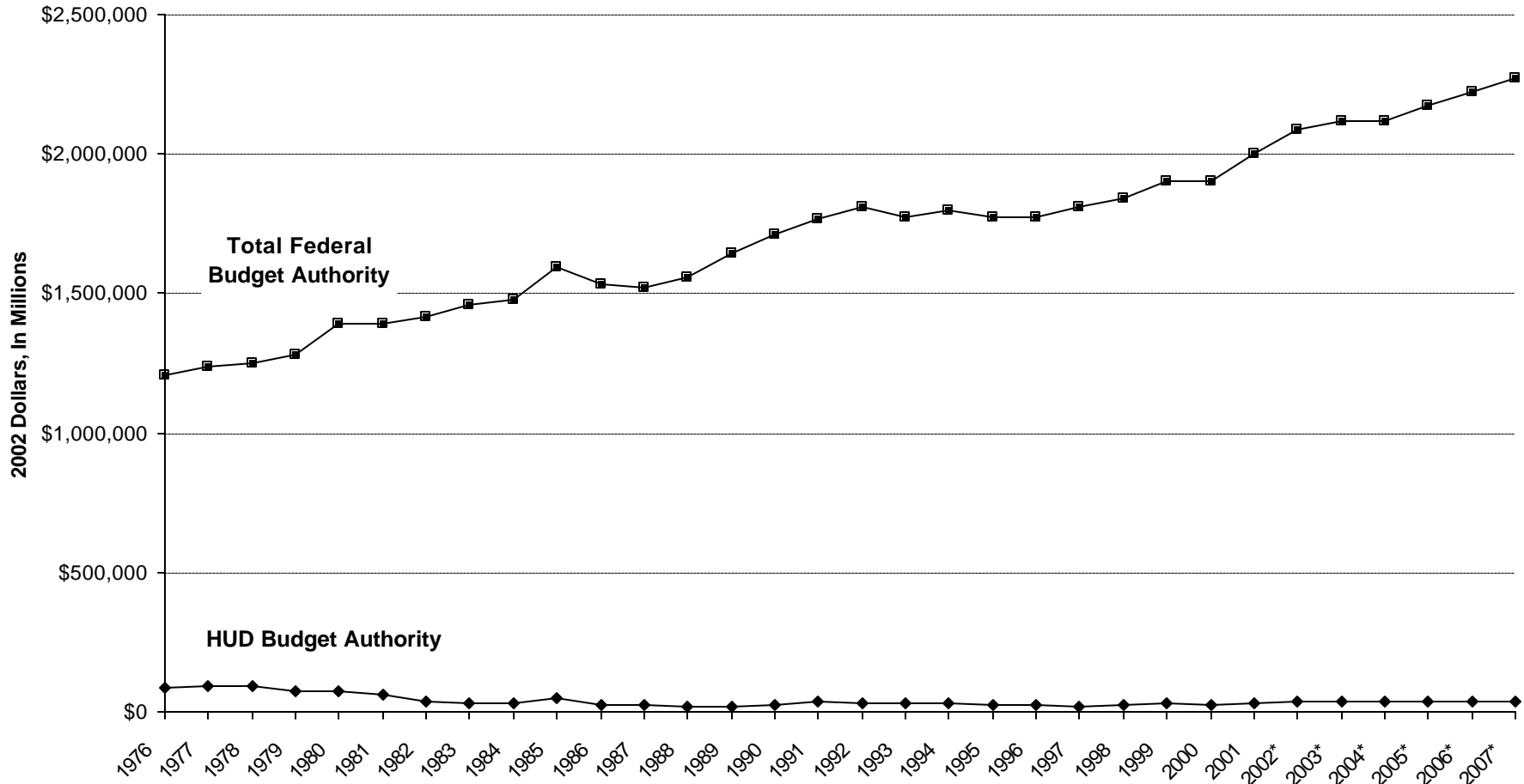
# Multifamily Housing Was Less Than One-Third Of New Construction In 2001



Source: Construction Industry Research Board

California Budget Project  
October 2002

## Total Federal Budget Authority Has Increased, While HUD Spending Has Declined

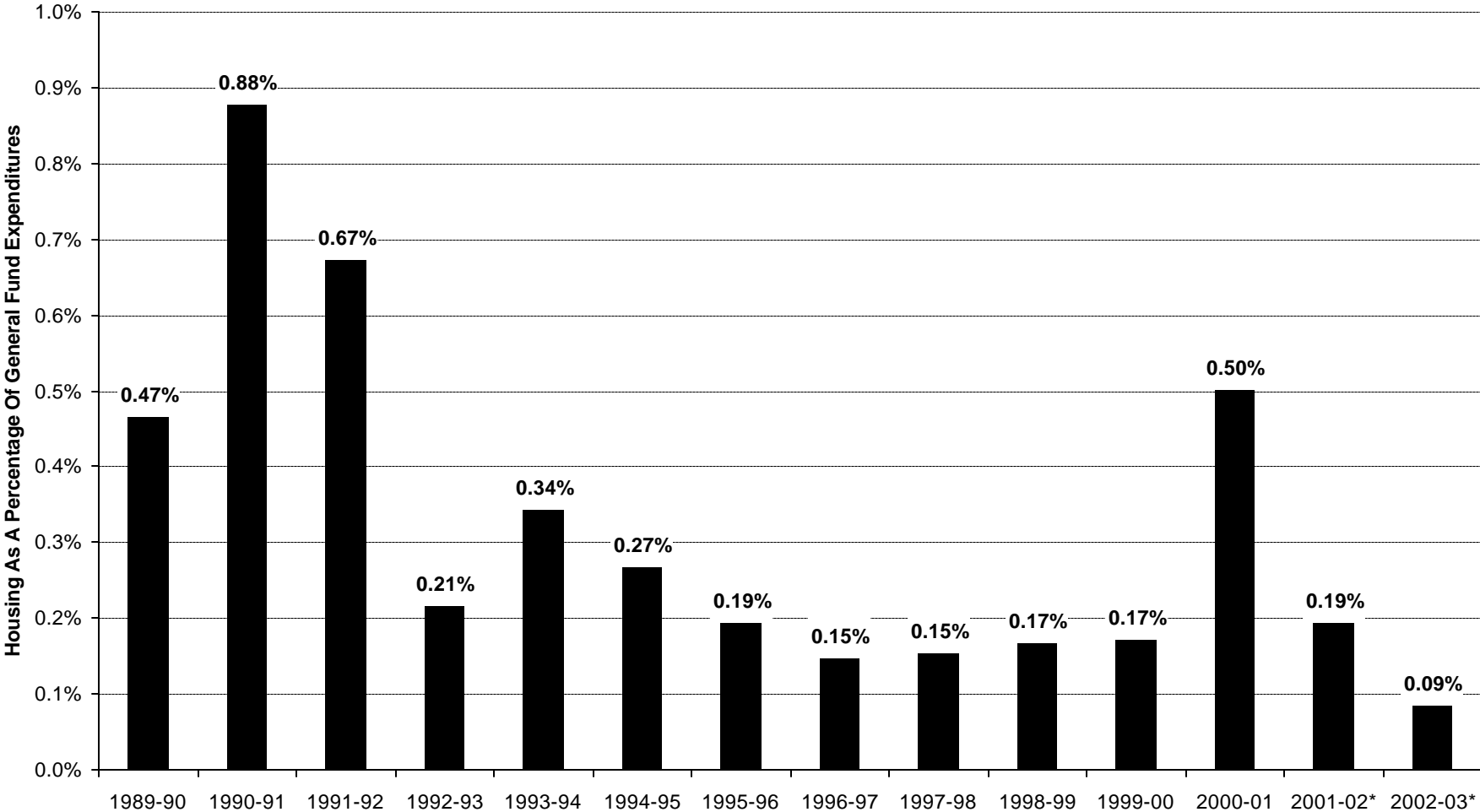


\*Estimated

Source: National Low Income Housing Coalition

California Budget Project  
October 2002

# State Housing Funds Account For A Small Fraction Of General Fund Spending



\*Budgeted. 2001-02 includes midyear reductions. Source: CBP calculations based on Department of Finance, Franchise Tax Board, and Department of Housing and Community Development data