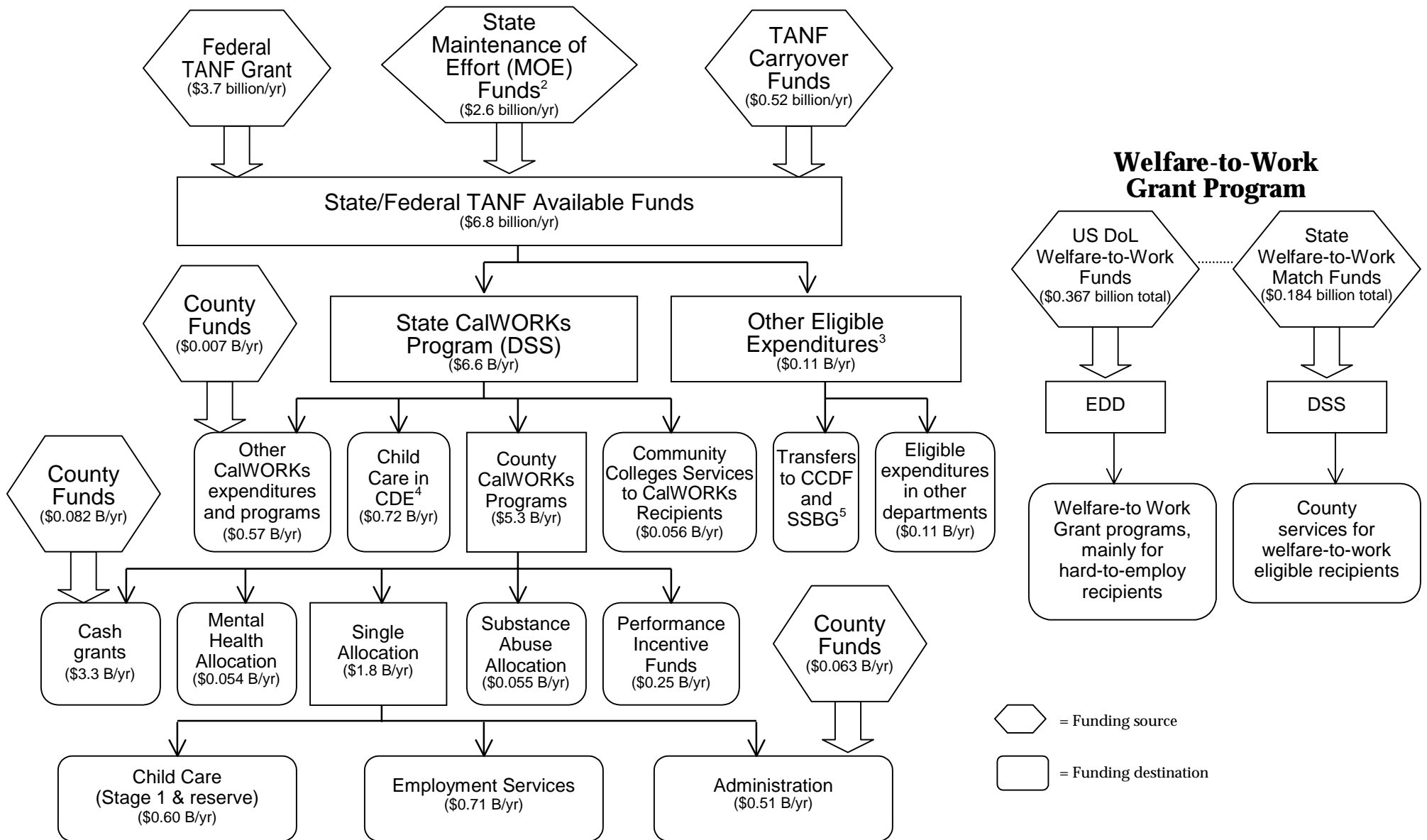


Figure 1: Funding Stream for TANF and CalWORKs-Related Programs¹



1. All annual amounts correspond to 2000-01 appropriation levels. Figures for Welfare-to-Work Program are total federal grant and state match funds.

2. Does not include counties' share of MOE, reflected separately.

3. For the purposes of this diagram, CalWORKs expenditures include only those program costs funded with TANF or state MOE moneys (e.g., not Welfare-to-Work grants or matching funds). Also, some programs are TANF- or MOE-eligible because of past funding history (e.g., county probation programs that were formerly eligible for funding under the federal Emergency Assistance Program) or because of the population they serve (e.g., state funded food stamps for noncitizens who would otherwise be eligible for CalWORKs; residential treatment for CalWORKs eligible parolees).

4. Stage 2 and Stage 3 CalWORKs Child Care program in California Department of Education (CDE) for current and former CalWORKs recipients. Federal CCDF (Child Care Development Fund) dollars, not shown here, are also used for Stage 2 and Stage 3 child care. The CCDF funds child care programs for low income children.

5. SSBG refers to the Social Services Block Grant (also known as Title XX), which provides states with non-matching funds to provide a wide variety of social services. Federal law allows states to transfer a certain portion of their TANF grants to the SSBG and CCDF each year.